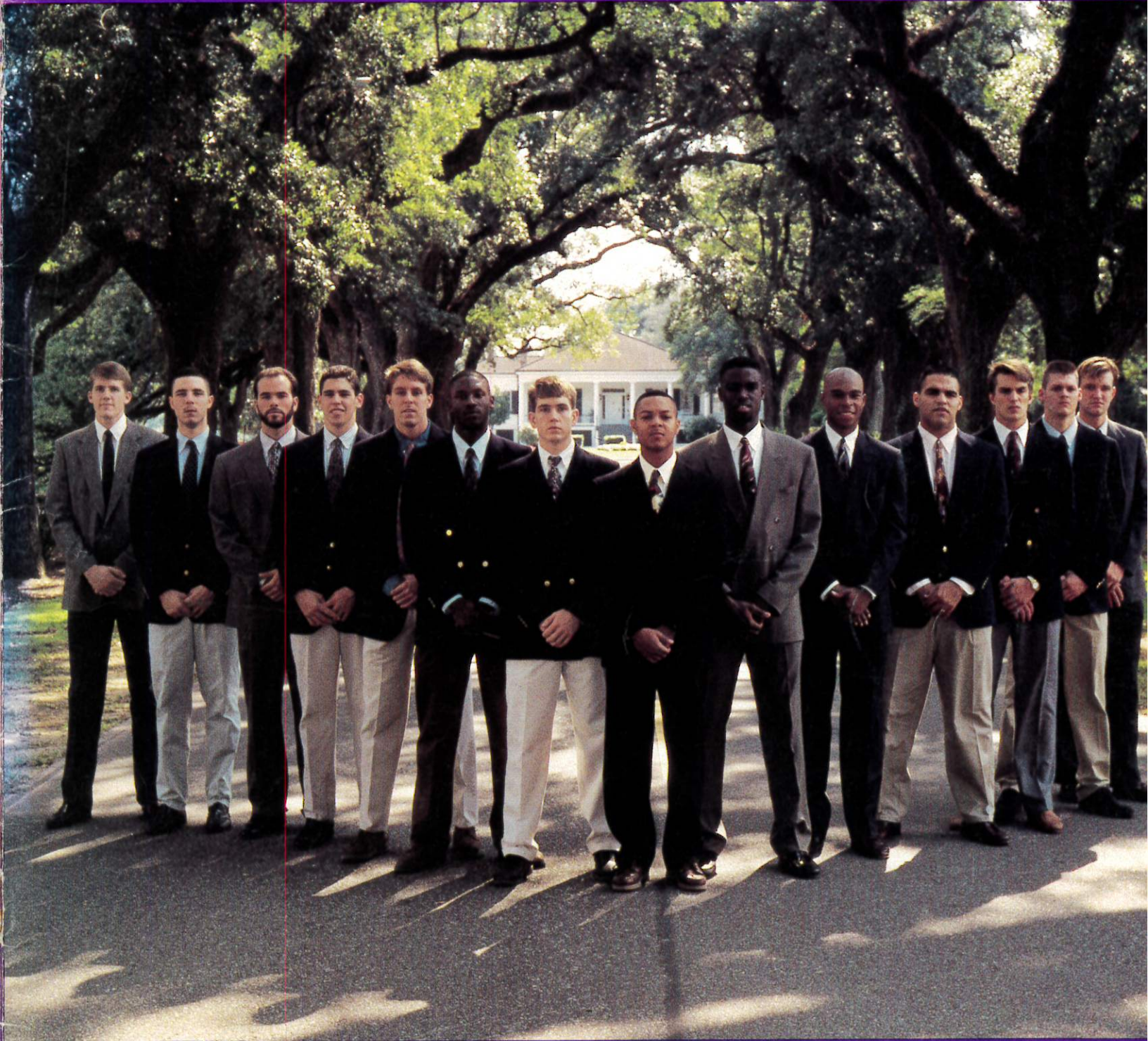


Pointed on the Road to Success...



**SPRING HILL COLLEGE
93 BASKETBALL 94**

SPRING HILL COLLEGE

Spring Hill College is the Jesuit College of the South, the oldest four-year college in Alabama and the fifth oldest Catholic college in America.

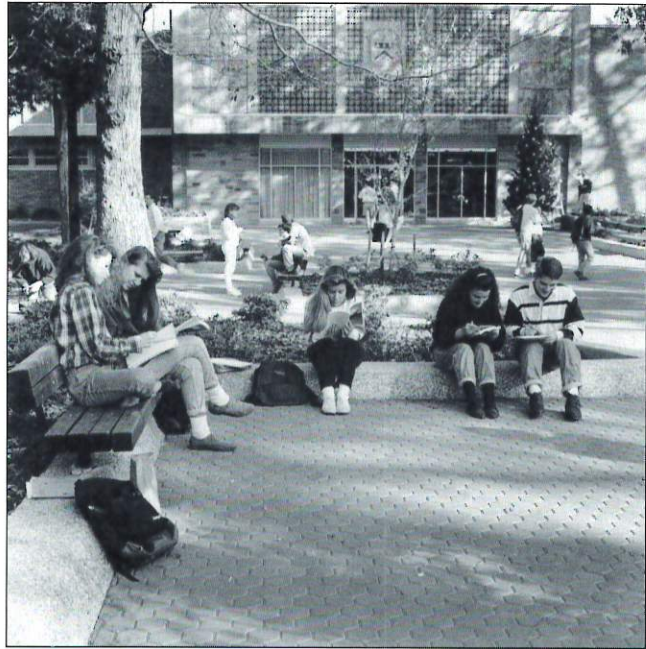
A Spring Hill education is deeply grounded in the liberal arts, but also benefits from our 450-year Jesuit heritage, and our emphasis on personal values, moral and ethical questioning and service to community.

With approximately 986 undergraduate students pursuing degrees at Spring Hill, you will have the advantage of learning in an intimate setting. Our classes average 15 students and our student faculty ratio is 14.1. This close-knit community of friends promotes personal interaction between you and your peers, advisers, administrators and teachers.

At Spring Hill you will also be able to take advantage of our special location. Mobile offers the charm of the deep South and the beautiful Gulf Coast beaches are close. New Orleans is just two hours away.

Your education can also be put to work in Mobile. Our students routinely intern at the top banking and financial institutions in Mobile and also at area newspapers and radio and television stations.

The Jesuit heritage, special location, and personal size are a part of what we call the Spring Hill Experience. Our students love every minute of it. Our graduates benefit every day from it.



Spring Hill College does not discriminate—either in the admissions of students or in any of its policies, programs or activities—on the basis of race, color, sex, religion, national or ethnic origin, age or physical handicap.

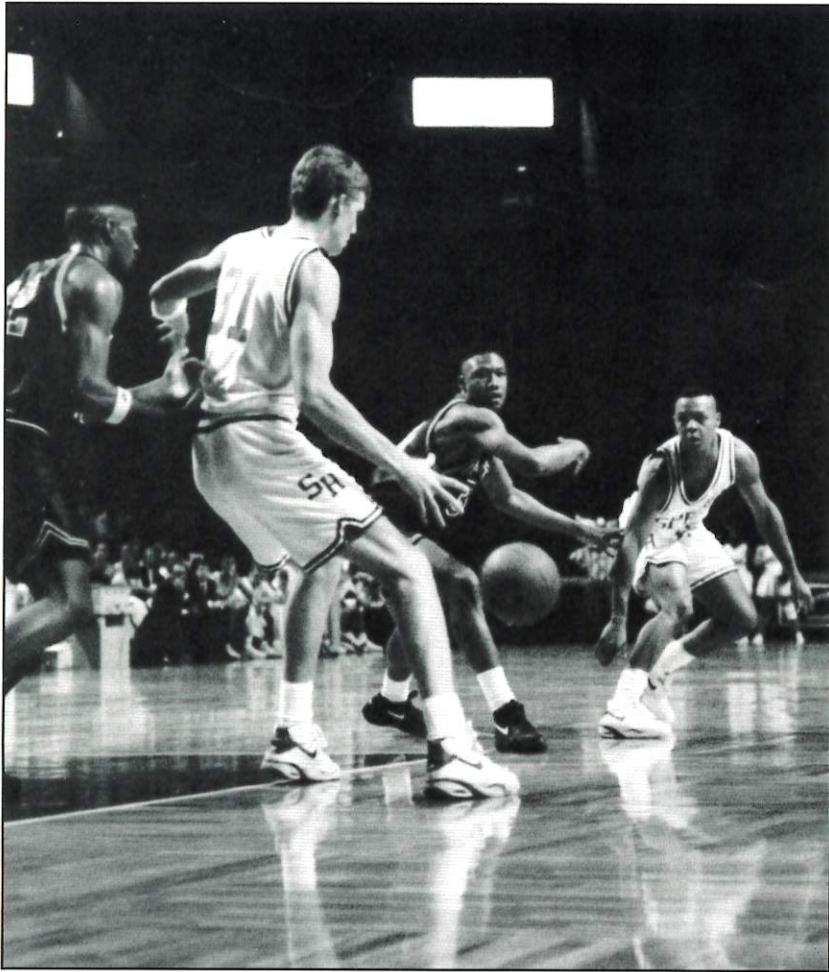
THE **HOLE**

2618 Old Shell Road

Private Club • Members & Guest Welcome

Valid I.D. REQUIRED

SEASON OUTLOOK '93-'94



Success has brought on changes with the Men's Basketball program at Spring Hill College. After two straight District 30 Championships and two successive NAA National Tournament births, the Badger program is in transition.

The architect of Spring Hill's rise to national prominence, Coach Carl Nash, has earned a well deserved opportunity to assist former South Alabama Coach Cliff Ellis at Clemson University in the Atlantic Coast Conference. Nash departs for Division I with the best winning percentage in Spring Hill history, .618.

The loss of Nash was not the only departure that has Badger faithfuls concerned. Arguably the best Badger Basketball player in history, P. J. Thelen, has graduated. Thelen injured his foot at the Atlanta Hawks Veteran Camp and will have to rehabilitate it for another shot at the professional level next season. Thelen also took with him his 18.8 PG, 64% FG shooting, 7.9 RPG, 67 steals and 35 block shots. These statistics along with the graduation of the strong nucleus point guard Sean Wright, Wingman Doug Layman and veteran post players Derek Wright and Brad Copenhaver would seem to leave the cupboard bare at the Hill.

That just might not be the case. Spring Hill has replaced Coach Nash with former Florida Southern Assistant, Joe Niland. Niland brings to Spring Hill lots of experience in recruiting and a background in successful small college programs that the Badgers needed. Coming from two of the most powerful Division II Basketball programs, Florida Southern and the University of Tampa, Niland is aware of what it takes to win at this level.

Helping Niland in his effort to maintain excellence on the Hill will be two strong District 30 performance seniors, Ronald Gomez and Marc Allen. Two-time All

District team member Ronald Gomez provides the Badgers with the offensive weapons needed to score from anywhere on the floor. Gomez, known for his intense play, will be called on to provide the on-the-floor leadership this season. 6'10" Marc Allen is an explosive inside force who can hurt opponents with his soft inside jumpshot. Allen will also have to step up his defense and rebounding to help the Badgers reign supreme in District play this season. Niland is definitely looking for these two senior Co-Captains to lead the way.

To support Allen and Gomez in post, the Badgers look very deep with a combination of experienced veterans and an outstanding Freshman. Veterans Sam Coates, Chris Graefe, Demetrios Tyson and Kevin Andrews provide Niland with a core solid veterans who can provide back up when needed. However, it is 6'7" Freshman Eddie Timmons who has the talent to push for the quality time needed in either post spot. Niland has to be pleased with the depth and talent that the Badgers have at the post spots.

If there is a concern for Niland coming in, it will be who will step up and take over on the perimeter. With the departure of last years veterans, the only players who saw much time last season were Sophomore guard Steve Sterling and Junior Bobby Parker. Parker seems to be the one to step up and take command. The explosive athlete from Theodore High School must gain consistency to give the Badgers the weapons needed both offensively and defensively. Sterling has the best spot to take over at the point, but look for Vigor High School star Freshman Eric Lovett to push him at that spot. With not much depth, Niland will have to rely on Senior Mark Hubbard and Junior College transfer Jason Roberts to hold down the small forward positions. Both Hubbard and Roberts are long range bombers who can light it up from 3 point range. This group certainly has the athletic ability which, when combined with playing experience, could give Spring Hill the play needed to challenge for a Conference title.

For the Spring Hill Basketball team to make it 3 in a row as District 30 champs, they must survive one of the toughest NAA schedules in the country. They are matched home and home with District 27 foes Auburn at Montgomery, Montevallo and Faulkner University and meet Division I SWAC power Alabama State December 20th in Montgomery.

In the past this tough pre-conference schedule has helped the Badgers prepare for its tough GCAC schedule. If the Badgers can maintain their confidence and mature as the year goes along, look for them to make another run at a title.

THE COACHES



Head Coach

**J
O
E
N
I
L
A
N
D**

Entering his first year as the Badger's new Head Coach, Niland has some big shoes to fill. Replacing Carl Nash who guided the Badger program to back-to-back NAIA National Tournament appearances and the best winning percentage of any coach in Spring Hill's history will be no small task.

Niland is familiar with programs rich in tradition. From 1990 to 1993, he assisted Gordon Gibbons at Florida Southern College in Lakeland, FL where the Moccasins were 73-20 in three seasons, winning two Sunshine State Conference Tournament Championships and earning two berths in the NCAA Division II National Tournament. In 1990-91, FSC finished #4 in the final poll. From 1988-90, Joe was assistant to Richard Schmidt at the University of Tampa where the Spartans earned two SSC titles and two NCAA National Tournament appearances. In 1989-90 they were ranked #1 in the NCAA's final poll.

The Buffalo, NY native is no stranger to Jesuit higher education. Joe's father starred at Canisius College, a Jesuit school in Buffalo, NY, from 1938-42 and returned to Coach the Golden Griffins from 1947-54. The senior Niland was also the player personal director and chief scout of the Buffalo Braves (NBA) from 1969-74.

Joe's uncle, Thomas J. Niland was the Athletic Director at LeMoyne College, a Jesuit school in Syracuse, NY from 1947-92. The Niland family association with Jesuit institutions has continued since Joe's younger brother Dave has been an assistant at Canisius College since 1992. Joe is married to the former Ellen Bonin and they have three children: A.J. (9 yrs.), Katelin (6 yrs.) and Jake (1 yr.).



MIKE MORAN, Assistant Coach

Coach Moran is entering his first year as an assistant at Spring Hill. The thirty-two year old Tampa, FL native earned his Bachelor's Degree at the University of South Florida in 1984. Before joining the Spring Hill Basketball program, Moran was Head Basketball Coach at Plant High School in Tampa, FL from 1985-89 and at King High School 1989-92 where he compiled a record 92 and 50 with 2 District titles.

Moran's duties include on-the-floor coaching and recruiting.



DEREK WRIGHT, Assistant Coach

The Oklahoma native is finishing his degree at Spring Hill while assisting with the Men's Basketball program. The two-time All-Conference player at Northern Oklahoma College gave the Badgers a real boost last season with his strong post play. This year Wright is Assisting Coach Niland with academic support and on-the-floor coaching.

Wright is finishing his degree on the Robert B. Wilkins Memorial Scholarship endowed by Arthur R. Outlaw.

OTHER COACHES



Frank Sims
Athletic Director
Head Basketball Coach



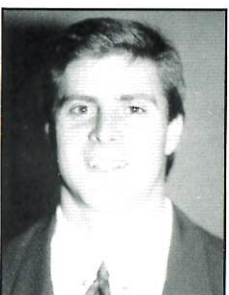
Bruce Sims
Head Tennis
Coach



James Walker
Men's and Women's
Head Cross-Country Coach



Mark Priede
Men's and Women's
Head Golf Coach



Ron Brill
Head Soccer Coach



Elis Ollinger
Head Sailing Coach



Lorian Murdock
Athletic Secretary

DIRECTORY

4000 Dauphin Street
Mobile, AL 36608
(205) 460-2346

LOCATION:	Mobile, Alabama
FOUNDED:	1830
ENROLLMENT:	1000
NATIONAL AFFILIATION:	NAIA Division 1
CONFERENCE:	Gulf Coast Athletic Conference
NICKNAME:	Badgers
COLORS:	Purple/White
HOME FACILITY:	St. Paul's Gymnasium (1000)
PRESIDENT:	William J. Rewak, S.J.
ATHLETIC DIRECTOR:	Frank Sims
FACULTY ATHLETIC REPRESENTATIVE:	Dr. Robert MacAleese
ATHLETIC TRAINER:	Brian Ellison
TEAM MANAGER:	Ernie Buday
SPORTS INFORMATION DIRECTOR:	Bruce Sims

BASKETBALL STAFF

Men's Head Coach	Joe Niland
Alma Mater	Buffalo, 1981
Record & Years at Spring Hill	0-0
Record 1991-92	22-9 District Champions
Best Time To Contact	9:30 a.m. - 3:00 p.m.
Assistant Coach	Mike Moran (South Florida '84)
Assistant Coach	Derek Wright (Spring Hill)



Kim Vaughn

Rebecca Cox

Melissa Chuilli

Tamu Wilson

Jacqueline Brennan

Mary Williams

Nancy Perez

Christine Piazza

(Not Pictured Penny Schuessler)



Spring Hill College Badgers 1993-94

KNEELING (L to R): Jason Roberts, Eddie Timmons, Chris Graefe, Sam Coates, Marc Allen, Kevin Andrews, Ron Gomez. STANDING (L to R): Steve Sterling, Chad Frazier, Demetrics Tyson, Eric Lovett, Mark Hubbard, Bobby Parker.

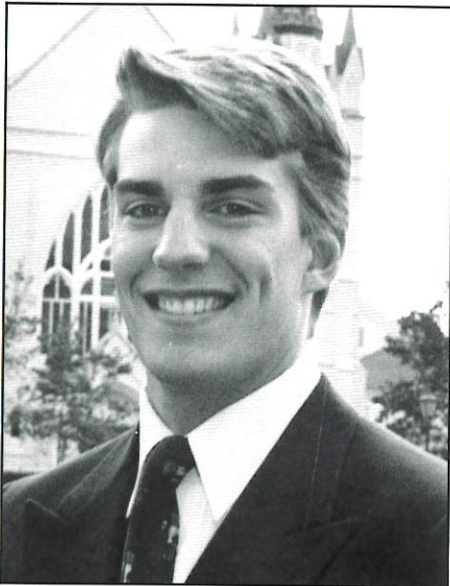
THE BADGERS

NO.	PLAYERS	HT.	WT.	CLASS	POS.	HOMETOWN	PREVIOUS SCHOOL
10	ROBERT PARKER	6'3"	180	JR.	G	THEODORE, AL	THEODORE H.S.
11	STEPHEN STERLING	5'10"	170	SO.	G	BATON ROUGE, LA	CATHOLIC H.S.
13	CHAD FRAZIER	6'1"	175	FR.	G	RICHLAND, MS	RICHLAND H.S.
14	ERIC LOVETT	6'4"	175	FR.	G	MOBILE, AL	VIGOR H.S.
15	DEMETRICS TYSON	6'4"	210	JR.	F	LOACHAPOKA, AL	LANDER COLLEGE
22	MARK HUBBARD	6'4"	185	SR.	G	OCEAN SPRINGS, MS	MS. GULF COAST JC
31	MARC ALLEN	6'10"	210	SR.	C	MOBILE, AL	MOBILE COLLEGE
32	JASON ROBERTS	6'6"	210	JR.	F	FRANKLIN, TN	COLUMBIA STATE J.C.
33	ED TIMMONS	6'7"	210	FR.	F	SLIDELL, LA	SALMEN H.S.
40	KEVIN ANDREWS	6'5"	210	SR.	F	ATLANTA, GA	TUCKER H.S.
44	SAM COATES	6'7"	215	SR.	C	BATON ROUGE, LA	RUNNELS H.S.
50	AL CUETO	6'4"	210	FR.	C	MIAMI, FL	BELEN H.S.
54	RONALD GOMEZ	6'4"	230	SR.	F	ABBEVILLE, LA	FAULKNER JC
55	CHRIS GRAEFE	6'5"	210	SR.	F	W. PALM BEACH, FL	CARDINAL NEWMAN H.S.

Athletic Director: Frank Sims
Head Coach: Joe Niland
Assistant Coaches: Mike Moran
 Derek Wright

Trainer: Brian Ellison
Manager: Ernie Buday

PLAYERS



55 CHRIS GRAEFE

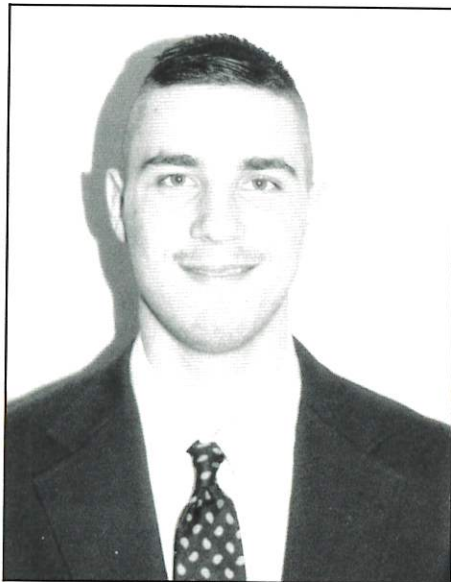
6-5 210 lbs. Senior Forward
West Palm Beach, FL

For the past three seasons, Chris's hard work and determination have helped him improve his game while also supplying the Badgers with solid back-up post play. Fans should see much the same from Chris here at Spring Hill in his final season.

HIGH SCHOOL: Chris played high school basketball at Cardinal Newman High School in West Palm Beach, Florida for Coach Steve Passinault.

PERSONAL: Chris enjoys golf, reading and scuba diving. His major is Communications.

	G	FG	PCT	FT	PCT	REB	AVG	PF	A	TP	AVG
1990-91	11	8/13	61.5	7/12	58.3	13	1.2	1	2	23	2.1
1991-92	11	11/22	50.0	2/9	22.2	10	0.9	4	1	25	2.3
1992-93	12	8/19	42.1	6/12	50.0	15	1.3	6	0	23	1.9



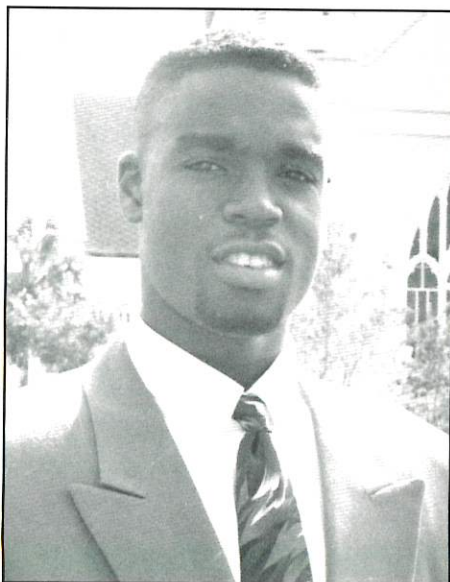
33 EDDIE TIMMONS

6-7 210 lbs. Freshman Forward
Slidell, LA

Badger fans will love the intensity and enthusiasm that Timmons brings with him to Spring Hill. As a high school stand out Timmons attracted numerous Division I schools, but after visiting Spring Hill, Eddie knew this was the right place for his college career.

HIGH SCHOOL: Eddie played for Jay Carlin at Salmen High School in Slidell, LA.

PERSONAL: In his spare time, Timmons enjoys listening to music. Eddie's favorite food is red beans and rice.



14 ERIC LOVETT

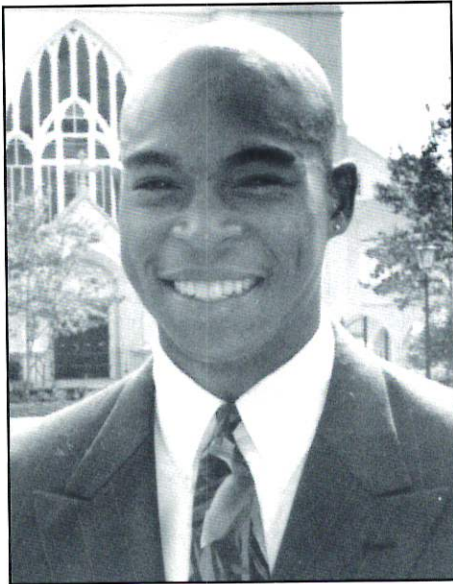
6-4 175 lbs. Freshman Guard
Mobile, AL

This highly recruited local star from Vigor High School chose Spring Hill for all the right reasons, Academics first and Athletics second. Eric is another newcomer who Coach Niland expects to make an immediate impact. Because of his great size and solid ballhandling, Eric can play either Pt. Guard or the Wing spot. The future is bright with Eric at the "Hill".

HIGH SCHOOL: Lovett played for Coach Dwight Ladd at Vigor High School in Mobile.

PERSONAL: In his spare time, Eric enjoys fishing.

Eric Lovett is the recipient of a scholarship endowed by Joseph P. Langan.



10 ROBERT PARKER

6-3 180 lbs. Junior Guard
Theodore, AL

Parker's tremendous athleticism and explosive offense play has impressed Badger fans since he first set foot on campus. After playing a supporting role for the past two seasons, it is time for Bobby to step into the spotlight. If the Badgers are to remain a force in the GCAC, they must have solid performances from Mr. Parker.

HIGH SCHOOL: Bobby averaged 14.7 ppg, 6 assists and 4 rpg for Coach Tony Combs at Theodore High School. He was also a member of the Theodore Honor Roll.

PERSONAL: In his spare time, Bobby enjoys fishing, reading and going to church. His major will be Business Marketing while at the "Hill".

	G	FG	PCT	FT	PCT	REB	AVG	PF	A	TP	AVG
1991-92	30	29-69	42.0	19-32	59.4	26	0.9	43	17	77	2.6
1992-93	28	65/148	43.9	45/70	64.3	30	1.1	55	26	188	6.7



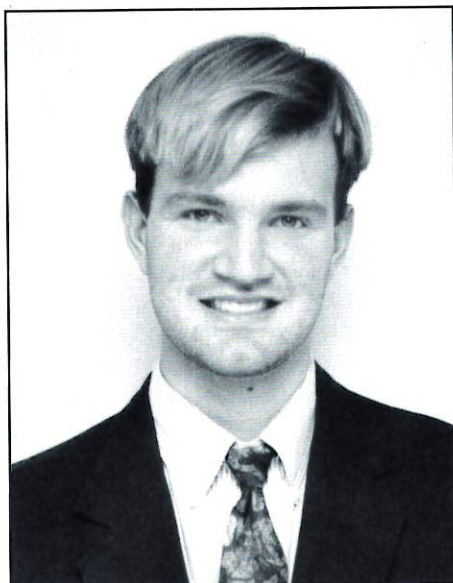
32 JASON ROBERTS

6-6 210 lbs. Junior Forward
Franklin, TN

This Junior College transfer from Tennessee is expected to make an immediate impact this season. Roberts brings with him outstanding athletic ability along with a feathery shooting touch to the Badger program. This combination will make him an exciting player to watch.

HIGH SCHOOL/JUNIOR COLLEGE: Jason hails from Franklin, TN where he attended Page High School and played for Coach Jim Ringstaff. The last two seasons were spent playing in the very tough TJCAA at Columbia State Junior College for Coach Louis Conner.

PERSONAL: In his spare time, Jason enjoys watching television and enjoying a day at the beach.



44 SAM COATES

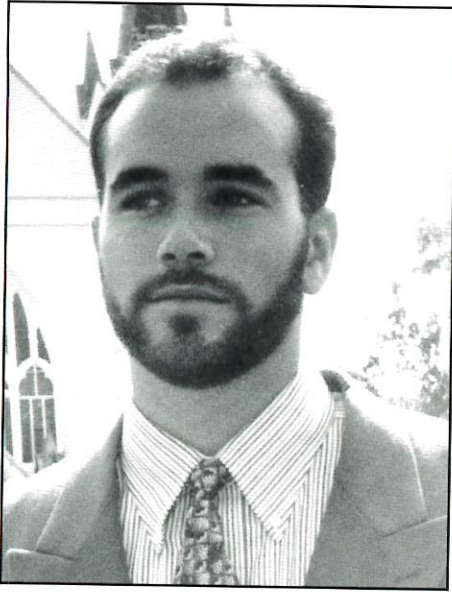
6-7 215 lbs. Senior Center
Baton Rouge, LA

Fundamentally solid is the best way to describe this senior from Baton Rouge. Coates' best asset is probably his soft jumper, but this season the Badgers will need more of his basketball savvy than the long range jump shot. Sam is expected to give either post position plenty of depth.

HIGH SCHOOL: Sam played basketball at Runnels High School in Baton Rouge, LA for Coach Kevin Sivils.

PERSONAL: Sam enjoys tennis, baseball, and water skiing in his spare time. His major is Business Management.

	G	FG	PCT	FT	PCT	REB	AVG	PF	A	TP	AVG
1990-91	17	8/24	33.3	11/12	91.7	23	1.4	15	2	28	1.6
1991-92	26	27/56	48.2	18/25	72.0	38	1.5	33	8	78	3.0
1992-93		28/46	60.9	25/36	69.4	38	1.5	28	11	84	3.2



40 KEVIN ANDREWS

6-5 210 lbs. Senior Forward
Stone Mountain, GA

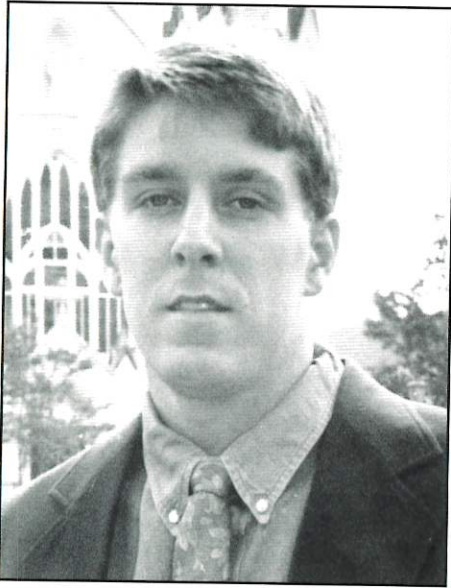
Known as a fierce competitor, Andrews is constantly working to improve his game. His tireless work ethic is an inspiration to his teammates, who respect his perseverance and positive attitude.

Kevin also played for Coach Ron Brill's Spring Hill Soccer team this year.

HIGH SCHOOL: Kevin played high school basketball at Tucker High School in Tucker, GA for Coach Jack Waters.

PERSONAL: Andrews enjoys volleyball, weight lifting, and golf in his spare time. His major is Business Management.

	G	FG	PCT	FT	PCT	REB	AVG	PF	A	TP	AVG
1990-91	8	2/7	28.6	2/4	50.0	4	0.5	5	-	6	0.8
1991-92	9	4/11	36.4	5/10	50.0	6	0.6	11	0	13	1.4
1992-93	10	7/16	43.8	3/4	75.0	7	0.7	4	1	17	1.7



22 MARK HUBBARD

6-4 185 lbs. Senior Guard
Ocean Springs, MS

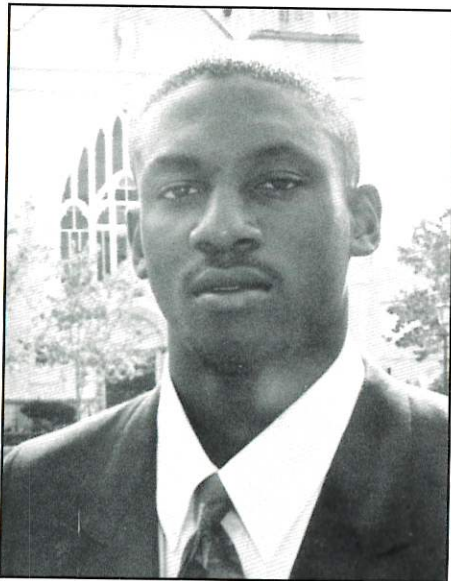
After spending the 1992-93 season in a back-up role, Mark is expected to step up and be a major contributor this year for the Badgers. Coach Niland is looking for Mark to provide leadership and experience for a relatively young group of perimeter players.

Mark was the MVP of his high school team as well as being voted to the All-District Team. A stellar student-athlete, Hubbard was on the Dean's List in junior college.

HIGH SCHOOL/JUNIOR COLLEGE: Mark played school basketball for Coach Jimmy Dye at Ocean Springs High School in Ocean Springs, MS. Mark was a member of the Mississippi Gulf Coast Junior College Bulldogs when they placed 4th in the Junior College National Tournament in 1991. His coach was Bobby Weathers.

PERSONAL: In his spare time, Mark enjoys fishing and hunting. Mark is majoring in History.

	G	FG	PCT	FT	PCT	REB	AVG	PF	A	TP	AVG
1992-93	10	11/30	36.7	11/17	64.7	14	0.7	12	3	39	2.0



15 DEMETRICS TYSON

6-4 210 lbs. Junior Forward
Loachapoka, AL

A tenacious rebounder, Tyson came to the Badgers from Lander College in South Carolina. As a freshman starter at Lander College, Demetrics averaged 10 points and 5 rebounds a game.

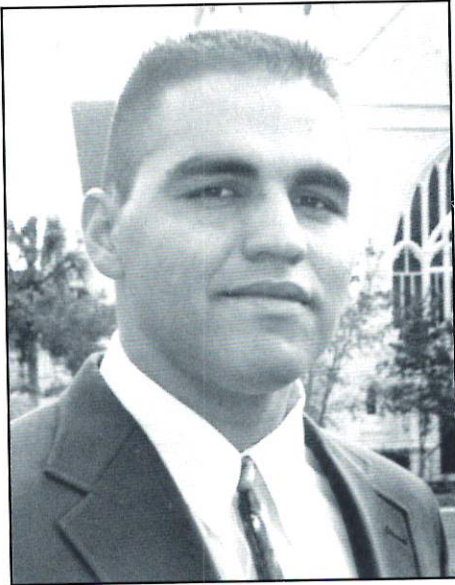
While a senior at Loachapoka High School, Tyson was All-State, All-Area, All-District, as well as being on the honor roll.

Despite seeing limited action last season, Demetrics is looked to by Coach Niland to provide depth at the small and power forward positions.

HIGH SCHOOL: Demetrics played high school basketball for Coach Larry Dichaira at Loachapoka High School in Loachapoka, Alabama. At Lander College in South Carolina, Demetrics played for Coach Fennis Horn.

PERSONAL: In his spare time, Demetrics likes to read and spend time with his friends. Demetrics' major is Accounting.

	G	FG	PCT	FT	PCT	REB	AVG	PF	A	TP	AVG
1992-93	10	6/17	35.3	5/8	62.5	11	1.1	8	1	17	1.7



54 RONALD GOMEZ

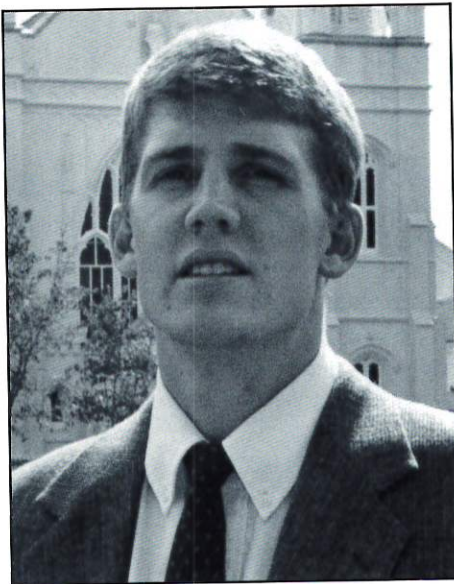
6-4 230 lbs. Senior Forward
Abbeville, LA

In the last four years, Gomez has played in the Louisiana State Finals, the Junior College National Tournament, and two NAIA National tourneys. One just might say Ronald is a winner. For the second year in a row, Ronald was named to All-Conference and All-District teams.

HIGH SCHOOL/JUNIOR COLLEGE: Ronald played high school basketball at Vermillion High School in Abbeville, LA. Along with his many honors, Ronald was nominated to play in the McDonalds All-American game. At Faulkner State Junior College, in Bay Minette, AL, Ronald played for Coach Jack Robertson.

PERSONAL: In his spare time, Ronald enjoys listening to music and being with his friends. His major is Communications.

	G	FG	PCT	FT	PCT	REB	AVG	PF	A	TP	AVG
1991-92	35	239/448	53.3	93/158	58.9	277	7.9	113	45	571	16.3
1992-93	32	111/211	52.6	70/98	71.4	114	5.4	70	33	292	13.9



31 MARC ALLEN

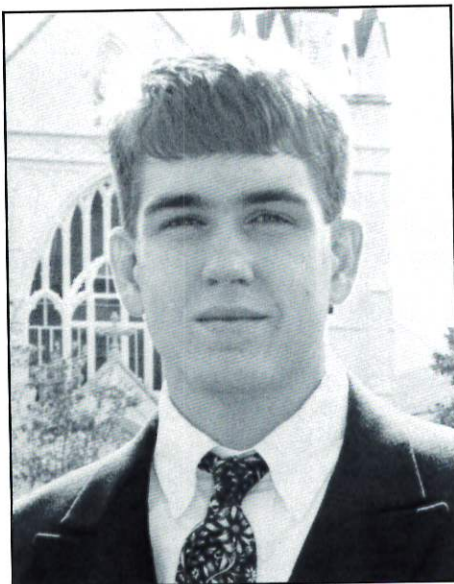
6-10 210 lbs. Senior Center
Mobile, AL

Consistency in production is what the Badgers need from Marc Allen this season. After an up and down 1992-93 season campaign, the 6'10" Mobile native must be a force in the post both offensively and defensively. Marc possesses the physical tools to be one of the most dominating Centers in the South.

HIGH SCHOOL: Marc averaged 25 points per game and 14 rebounds as an All-State performer for Coach Glenn Vickery at Mobile Christian High School.

PERSONAL: Marc enjoys fishing, volleyball and reading when he's not playing basketball. Marc's major at the "Hill" is Math.

	G	FG	PCT	FT	PCT	REB	AVG	PF	A	TP	AVG
1991-92	21	90/133	67.7	79/155	68.7	96	4.6	62	8	259	12.3
1992-93	29	112/178	62.9	118/154	76.6	135	4.7	91	23	342	11.8



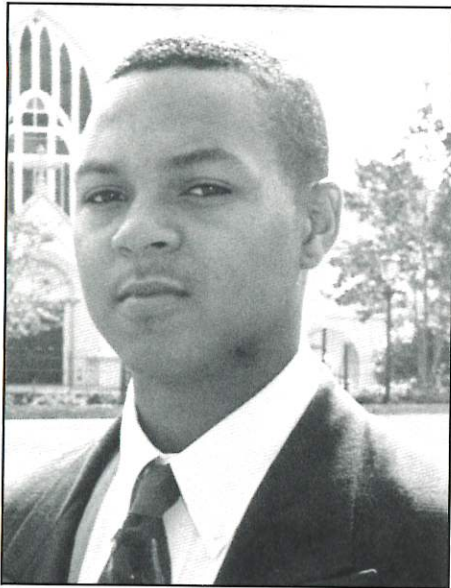
13 CHAD FRAZIER

6-1 175 lbs. Freshman Guard
Richland, MS

A pure shooter with long-range capabilities is the only way to describe this Freshman. "With his intensity, once he learns the College game it will be very hard not to play Chad," says Coach Niland. "You have to find a spot for someone who can shoot the way Chad does."

HIGH SCHOOL: Chad led this team in almost every offense category for Coach Richard Wilkinson at Richland High School, Richland, MS. Chad also set a school record of 43 pts. in one game.

PERSONAL: Frazier enjoys the outdoors. His favorite pastime is hunting squirrels.



11 STEPHEN STERLING

**5-10 170 lbs. Sophomore Guard
Baton Rouge, LA**

The time has come for this Sophomore to step and take the reigns of the Badger Ball Club. With the departure of point guard Sean Wright, Coach Niland will hand the ball to Sterling and expect Stephen to provide the leadership to a very unproven Badger perimeter game. Badger fans should see more than just the flashes of brilliance Sterling showed as a Freshman.

HIGH SCHOOL: Steve was an All-District pt. guard for Coach Glen Randow at Catholic High School in Baton Rouge, LA. He was also a member of the Honor Roll and was voted Catholic High's "Man of the Year."

PERSONAL: In his spare time, Steve like to read and spend time with his friends. His major is Pre-Med.

	G	FG	PCT	FT	PCT	REB	AVG	PF	A	TP	AVG
1992-93	30	41/78	52.6	39/50	78.0	21	0.7	38	34	134	4.5

HEAD ATHLETIC TRAINER



Brian Ellison

Brian Ellison is beginning his first year as head athletic trainer for the Badgers. Ellison is responsible for the sports medicine coverage of all Spring Hill College athletic teams.

Brian earned his Bachelor's degree in exercise physiology at Auburn University and is presently working on his Master's degree at the University of South Alabama. Brian reigns from Oneonta, AL.

BASKETBALL MEDIA OUTLETS

Newspapers

Mobile County News, P. O. Box 396, Bayou La Batre, AL 36509, (205) 342-1967
News Herald, P. O. Box 5809, Saraland, AL 36571, (205) 675-8885
Mobile Register Sports, P. O. Box 2488, Mobile, AL 36630, (205) 433-3467
The Catholic Week, 356 Government Street, Mobile, AL 36602, (205) 432-3529

Radio

WKRG, P. O. Box 160587, Mobile, AL 36616, (205) 479-4333
WBLX, P. O. Box 2823, Mobile, AL 36601, (205) 432-9393
WABB, P. O. Box 2148, Mobile, AL 36601, (205) 438-1480
WKSJ, P. O. Box 160706, Mobile, AL 36616-1706, (205) 770-2262
WDLT, 2402 Wolf Ridge Rd., Mobile, AL 36618, (205) 770-9898

Television

WALA-TV, P. O. Box 1548, Mobile, AL 36630, (205) 434-1065
WKRG-TV, P. O. Box 160587, Mobile, AL 36616, (205) 479-5555
WEAR-TV, P. O. Box 12278, Pensacola, FL 32581, (205) 438-9030 (Mobile #)

ACKNOWLEDGEMENTS

The Spring Hill Badger Basketball office would like to thank the entire local media for their support throughout this past basketball season. If there is anything we can assist you with, please feel free to contact us. A big thanks to all of our advertising supporters, whose efforts made our basketball guide possible. Also, to John Nicholas and the staff of Artcraft Press, Inc.

OPPONENTS

ALABAMA STATE UNIVERSITY

Montgomery, Alabama
Monday, December 20, 7:30 p.m. ASU

CONFERENCE: NCAA I / SWAC
ENROLLMENT: 5,500
HOME COURT: Reed Acadome
NICKNAME: Hornets
COLORS: Black/Old Gold
HEAD COACH: James Oliver
OFFICE: (205) 293-4508
1992-93 RECORD: 14-13

AUBURN UNIVERSITY AT MONTGOMERY

Montgomery, Alabama
Wednesday, December 1, 7:30 p.m. AUM
Saturday, December 11, 7:30 p.m.
St. Paul's Gym

CONFERENCE: Southern States, NAIA
ENROLLMENT: 5,600
HOME COURT: A.U.M. Physical Education Complex (4,000)
NICKNAME: Senators
COLORS: Orange/Brown
HEAD COACH: Larry Chapman
OFFICE: (205) 244-3542
1992-93 RECORD: 19-11

BELHAVEN COLLEGE

Jackson, Mississippi
Monday, January 10, 7:30 p.m. Belhaven
Monday, February 7, 8:00 p.m.
St. Paul's Gym

CONFERENCE: GCAC, NAIA
ENROLLMENT: 1,000
HOME COURT: Heidelberg (1,000)
NICKNAME: Blazers
COLORS: Green/Gold
HEAD COACH: Jason Conner
OFFICE: (601) 968-5936
1992-93 RECORD: 18-15

DILLARD UNIVERSITY

New Orleans, Louisiana
Saturday, January 8, 7:30 p.m. Dillard
Saturday, February 5, 7:30 p.m.
U. of South Alabama

CONFERENCE: GCAC, NAIA
ENROLLMENT: 1,700
HOME COURT: Dent Hall (3,500)
NICKNAME: Blue Devils
COLORS: Blue/White
HEAD COACH: Woodie Jackson
OFFICE: (504) 286-4753
1992-93 RECORD: 14-16

FAULKNER UNIVERSITY AT MONTGOMERY

Montgomery, Alabama
Tuesday, November 9, 7:30 p.m.
St. Paul's Gym
Tuesday, November 23, 7:30 p.m. Faulkner

CONFERENCE: Southern States, NAIA
ENROLLMENT: 750
HOME COURT: Tine Davis Gym (2,500)
NICKNAME: Eagles
COLORS: Blue/Grey/White
HEAD COACH: Tom Kelsey
OFFICE: (205) 272-5820
1992-93 RECORD: 15-18

LOUISIANA COLLEGE

Pineville, Louisiana
Friday, January 24, 8:00 p.m. Expo Hall
Saturday, January 29, 7:30 p.m. Louisiana

CONFERENCE: GCAC, NAIA
ENROLLMENT: 1,100
HOME COURT: H. O. West (4,500)
NICKNAME: Wildcats
COLORS: Royal Blue/Orange
HEAD COACH: Gene Rushing
OFFICE: (318) 487-7322
1992-93 RECORD: 5-18

LOYOLA UN. OF NEW ORLEANS

New Orleans, Louisiana
Saturday, November 13, 7:30 p.m. Loyola
Saturday, December 4, 7:30 p.m. Expo Hall

CONFERENCE: NAIA Div. 2, District 8
ENROLLMENT: 3,000
HOME COURT: Loyola Recreation Sports Complex (500)
NICKNAME: Wolf Pack
COLORS: Maroon/Gold
HEAD COACH: Jerry Hernandez
OFFICE: (504) 865-3137
1992-93 RECORD: 10-19

UNIVERSITY OF MOBILE

Mobile, Alabama
Monday, January 24, 7:30 p.m. U. of Mobile
Saturday, February 19, 7:30 p.m.
U. of South Alabama

CONFERENCE: GCAC, NAIA
ENROLLMENT: 1,660
HOME COURT: H. Austill Pharr (1,500)
NICKNAME: Rams
COLORS: Maroon/White
HEAD COACH: Dr. Bill Elder
OFFICE: (205) 675-5990
1992-93 RECORD: 23-11

UNIVERSITY OF MONTEVALLO

Montevallo, Alabama
Wednesday, November 17, 7:30 p.m.
St. Paul's Gym
Monday, November 29, 7:30 p.m. UM

CONFERENCE: Southern States, NAIA
ENROLLMENT: 3,200
HOME COURT: Myrick Hall (2,000)
NICKNAME: Falcons
COLORS: Purple/Gold
HEAD COACH: Rob Spivery
OFFICE: (205) 665-6593
1992-93 RECORD: 20-10

SELMA UNIVERSITY

Selma, Alabama
Monday, November 15, 7:30 p.m. Selma
Monday, December 13, 8:00 p.m.
St. Paul's Gym

CONFERENCE: NAIA District 27
ENROLLMENT: 350
HOME COURT: Jemison - Owens Gymnasium
NICKNAME: Bulldogs
COLORS: Royal Blue/White
HEAD COACH: Chris Harrell
OFFICE: (205) 872-9745
1992-93 RECORD: 4-20

SOUTHERN UNIVERSITY OF NEW ORLEANS

New Orleans, Louisiana
Saturday, January 15, 7:30 p.m.
St. Paul's Gym
Thursday, February 10, 7:30 p.m. SUNO

CONFERENCE: GCAC, NAIA
ENROLLMENT: 5,000
HOME COURT: The Castel (1,800)
NICKNAME: SUNO Knights
COLORS: Columbia Blue/Gold
HEAD COACH: Earl Hill
OFFICE: (504) 286-5195
1992-93 RECORD: 9-15

TOUGALOO COLLEGE

Tougaloo, Mississippi
Saturday, January 22, 7:30 p.m. Baker H.S.
Saturday, February 12, 8:00 p.m. Tougaloo

CONFERENCE: GCAC, NAIA
ENROLLMENT: 1,131
HOME COURT: Norwest Jr. High
NICKNAME: Bulldogs
COLORS: Royal Blue/Scarlet
HEAD COACH: James Turner
OFFICE: (601) 977-7809
1992-93 RECORD: 9-20

UNIVERSITY OF WEST FLORIDA

Pensacola, Florida
Friday, November 19, 7:30 p.m. UWF
Wednesday, December 15, 7:30 p.m.
St. Paul's Gym

CONFERENCE: NAIA/NCAA
ENROLLMENT: 8,000
HOME COURT: Gymnasium (3,000)
NICKNAME: Argonauts
COLORS: Blue/Green
HEAD COACH: Don Hogan
OFFICE: (904) 474-3003
1992-93 RECORD: New Team

WILLIAM CAREY COLLEGE

Hattiesburg, Mississippi
Thursday, January 13, 8:30 p.m.
St. Paul's Gym
Thursday, February 17, 8:00 p.m.
William Carey

CONFERENCE: GCAC, NAIA
ENROLLMENT: 2,200
HOME COURT: Clinton Gymnasium
NICKNAME: Crusaders
COLORS: Red/Black/White
HEAD COACH: Steve Knight
OFFICE: (601) 582-6111
1992-93 RECORD: 21-10

XAVIER UNIVERSITY

New Orleans, Louisiana
Thursday, January 27, 8:00 p.m.
McGill-Toolen H.S.
Thursday, February 3, 7:30 p.m. XU

CONFERENCE: GCAC, NAIA
ENROLLMENT: 3,391
HOME COURT: The Barn (1,200)
NICKNAME: Gold Rush
COLORS: Gold/White
HEAD COACH: Dale Valdery
OFFICE: (504) 483-7329
1992-93 RECORD: 24-8

1992-93 FINAL GAME STATISTICS

GAME-BY-GAME RESULTS

RECORDS

22-9 Overall GCAC 13-3

DISTRICT 30 CHAMPIONS

NAIA SWEET SIXTEEN

OPPONENT	RESULT	LEADING SCORER	LEADING REBOUNDER
PENSACOLA CHRISTIAN	W 112-47	P. J. THELEN (27)	DEREK WRIGHT (9)
LOYOLA UNIVERSITY	W 95-55	DEREK WRIGHT (22)	P. J. THELEN (10)
AUM	W 97-94	M. ALLEN, THELEN (20)	P. J. THELEN (12)
AUM	L 77-83	P. J. THELEN (27)	MARC ALLEN (7)
UNIVERSITY OF MONTEVALLO	L 73-84	SEAN WRIGHT (17)	SAM COATES (7)
LOYOLA UNIVERSITY	W 72-66	P. J. THELEN (27)	P. J. THELEN (10)
PENSACOLA CHRISTIAN	W 100-65	MARC ALLEN (20)	MARC ALLEN (7)
NICHOLLS STATE U.	L 68-85	MARC ALLEN (18)	DEREK WRIGHT (11)
FAULKNER UNIVERSITY	W 88-58	P. J. THELEN (24)	MARC ALLEN (10)
FAULKNER UNIVERSITY	L 73-80	BOBBY PARKER (23)	P. J. THELEN (10)
UNIVERSITY OF NEW ORLEANS	L 61-68	THELEN, D. WRIGHT, STERLING (11)	DEREK WRIGHT (8)
UNIVERSITY OF MONTEVALLO	W 75-63	P. J. THELEN (19)	THELEN, D. WRIGHT (7)
LOUISIANA COLLEGE	W 58-55	DEREK WRIGHT (13)	P. J. THELEN (7)
S.U.N.O.	W 96-71	RONALD GOMEZ (18)	RONALD GOMEZ (8)
BELHAVEN COLLEGE	W 67-63	P. J. THELEN (15)	SEAN WRIGHT (7)
DILLARD UNIVERSITY	W 92-78	P. J. THELEN (24)	P. J. THELEN (14)
WILLIAM CAREY	L 66-69	P. J. THELEN (21)	ALLEN, THELEN (6)
XAVIER UNIVERSITY	W 65-55	P. J. THELEN (24)	P. J. THELEN (9)
TOUGALOO COLLEGE	W 74-69	DEREK WRIGHT (19)	RONALD GOMEZ (10)
MOBILE COLLEGE	W 82-77	P. J. THELEN (23)	P. J. THELEN (9)
S.U.N.O.	W 90-81	MARC ALLEN (25)	P. J. THELEN (12)
TOUGALOO COLLEGE	W 78-61	RONALD GOMEZ (20)	RONALD GOMEZ (8)
LOUISIANA COLLEGE	W 81-61	P. J. THELEN (25)	P. J. THELEN (6)
WILLIAM CAREY	L 60-78	P. J. THELEN (16)	DEREK WRIGHT (9)
DILLARD UNIVERSITY	W 78-60	P. J. THELEN (24)	P. J. THELEN (10)
BELHAVEN COLLEGE	W 94-82	P. J. THELEN (25)	P. J. THELEN, S. WRIGHT (10)
XAVIER UNIVERSITY	L 72-91	MARC ALLEN (16)	P. J. THELEN (9)
MOBILE COLLEGE	W 87-70	RONALD GOMEZ (24)	P. J. THELEN (13)
DISTRICT 30 PLAYOFFS			
MOBILE COLLEGE	W 70-68	RONALD GOMEZ (21)	P. J. THELEN (8)
XAVIER UNIVERSITY	W 68-61	P. J. THELEN (24)	P. J. THELEN (12)
NAIA NATIONAL TOURNAMENT			
OKLAHOMA CITY	L 79-87	P. J. THELEN (22)	P. J. THELEN (9)

PLAYER	G	3-FGM	3-FGA	PCT	TOT FGM	TOT FGA	PCT	FTM	FIA	PCT	REB	AVG	AST	TO	BS	ST
P. J. THELEN	31	14	34	41.2	214	334	64.1	140	222	63.1	246	7.9	113	107	35	96
R. GOMEZ	21	0	0	0.0	111	211	52.6	70	98	71.4	114	5.4	33	47	5	70
D. WRIGHT	31	2	10	20.0	99	195	50.8	40	71	56.3	122	3.9	29	38	6	75
S. WRIGHT	31	7	38	18.4	64	160	40.0	42	68	61.8	97	3.1	137	71	3	76
M. ALLEN	29	0	0	0.0	112	178	62.9	118	154	76.6	135	4.7	23	48	9	91
D. LAYMAN	31	41	110	37.3	79	172	45.9	21	37	56.8	54	1.7	45	35	0	48
B. COPENHAVER	31	0	0	0.0	33	47	70.2	25	42	59.5	42	1.4	30	29	2	58
D. TYSON	10	0	0	0.0	6	17	35.3	5	8	62.5	11	1.1	1	7	0	8
S. COATES	26	3	7	42.9	28	46	60.9	25	36	69.4	38	1.5	11	15	6	28
S. STERLING	30	13	23	56.5	41	78	52.6	39	50	78.0	21	0.7	34	32	0	38
M. HUBBARD	20	6	20	30.0	11	30	36.7	11	17	64.7	14	0.7	3	11	2	12
B. PARKER	28	13	42	31.0	65	148	43.9	70	70	64.3	30	1.1	26	50	4	55
C. GRAEFE	12	1	1	100.0	8	19	42.1	12	12	50.0	15	1.3	0	1	0	6
K. ANDREWS	10	0	0	0.0	7	16	43.8	4	4	75.0	7	0.1	1	1	0	4
B. STEIN	2	0	1	0.0	1	3	33.3	0	0	0.0	2	1.0	0	0	1	1
TEAM TOTALS																
SPRING HILL	31	100	287	34.8	879	1654	53.1	590	889	66.4	948	30.6	486	492	73	295
OPPONENTS	31	141	432	32.6	777	1700	45.7	496	756	65.6	861	27.8	378	539	73	244

BADGER RECORDS

INDIVIDUAL

Game

Points - 49 - Bill Hajeski vs Troy State 2-5-68
 Field Goals Made - 21 - Kevin Ollis vs. Dillard 1979-80
 Free Throws Made - 23 - Bill Hajeski vs Troy State 2-5-68
 Rebounds - 24 - Mark Pinkowski vs. South Alabama 1-20-72
 Assists - 16 - Chris Nelson vs. Heritage 11-9-84
 3 Point Field Goals Made - 8 Mike McKinley vs. Tougaloo College 1/26/90
 3 Point Field Goals Attempted - 11 Mike McKinley vs. Tougaloo 1/26/90
 Steals - 5 P. J. Thelen vs. New Orleans 12-13-91

Season

Points - 714 - Kevin Ollis 1979-80
 Point Average - 26.5 - Happy Mahfouz 1954-55
 Free Throws Made - 214 - Happy Mahfouz 1954-55
 Field Goals Attempted - 661 - Kevin Ollis 1979-80
 Field Goals Made - 321 - Kevin Ollis 1979-80
 Best Field Goal Percentage - 64.1% - P. J. Thelen 31 games
 Best Free Throw Percentage - 82.8 - Darin Tang 1985-86
 Rebounds - 356 - Happy Mahfouz 1954-55
 Assist - 279 - Chris Nelson 1987-88
 214 - Chris Nelson 1985-86
 3 Point Field Goals Made - 65 Mike McKinley 1989-90
 3 Point Field Goals Attempted - 136 Mike McKinley 1989-90
 3 Point Field Goal Percentage - 47.8 Mike McKinley 1989-90
 Steals - 96 - P. J. Thelen 1991-92

Career

Points - 2337 - Chris Williams 1984-88
 Average (50 +) - 18.7 - Kevin Ollis 1979-81 (56 games - 1049 pts)
 Average (75 +) - 17.6 - Chris Williams 1985-88 (134 games - 2337 pts.)
 Games Played - 146 - Chris Nelson 1984-88
 146 - Darin Tang 1984-88
 134 - Chris Williams 1984-88
 Field Goals Made - 897 - Chris Williams 1984-88
 770 - Darin Tang 1984-88
 733 - Joe Grill 1968-71
 Free Throws Made - 536 - Happy Mahfouz - 1952-55
 Rebounds - 1266 - Happy Mahfouz - 1952-55
 Assist - 836 - Chris Nelson 1984-88
 3 Point Field Goals Made - 175 Mike McKinley 1986-90
 3 Point Field Goals Attempted - 404 Mike McKinley 1986-90
 3 Point Field Goals Percentage - 43.3 Mike McKinley 1986-90

TEAM

Game

Most Points - 136 vs. Southeastern Baptist 11-1-84
 Most Field Goals Made - 61 vs. Southeastern Baptist 11-1-84
 Best Field Goal PCT - 66.9 vs. William Carey 3-5-85
 Most Free Throws Made - 37 vs. Troy State 1968
 Most Free Throws Attempted - 36 vs. Phillips College 2-22-85
 Best Free Throw PCT (25 or more attempts) - 88.30 vs. Troy State 22-25 2-18-85
 Most Rebounds - 66 vs. Loyola 11-9-90
 Largest Margin of Victory - 75 vs. Heritage College 11-9-84

Season

Most Wins - 27 - 1987-88
 Most Points - 3256 - 1987-88
 Most Field Goals Made - 1244 - 1987-88
 Best Field Goal Percentage - 56% - 1987-88
 Most Free Throws - 686 - 1987-88
 Best Free Throw Percentage - 73.9% - 1986-87
 Most Rebounds - 1353 - 1984-85
 Best Rebound Average - 40.1 - 1984-85
 Most Steals - 331 1991-92

PAST RECORDS

92-93	22-9	GCAD (13-3) Dist. 30 Champs NAIA National
91-92	24-11	GCAC (10-6) Dist. 30 Champs NAIA 2nd Rd.
90-91	17-12	GCAC 6-10
89-90	17-15	GCAC 8-8 Playoffs (District 30)
88-89	18-14	GCAC 9-7 Playoffs (District 30)
87-88	27-13	GCAC 12-4 Playoffs (District 30)
86-87	21-13	GCAC 9-7 Playoffs (District 30)
85-86	15-23	GCAC 2-10
84-85	20-18	GCAC 4-6 Playoffs (District 30)
83-84	4-20	GCAC 1-11
82-83	5-16	GCAC 2-10
81-82	1-25	GCAC 0-12
80-81	3-22	SCC 0-14
79-80	8-23	SCC 4-10
78-79	7-18	SCC 7-11
77-78	12-15	SCC 8-10
76-77	18-11	SSC N/A
75-76	13-14	SSC 5-9
74-75	20-7	SSC 12-2 *Southern State Conf. Champs
73-74	14-11	SSC 8-4
72-73	6-19	
71-72	10-12	
70-71	9-17	
69-70	9-16	
68-69	10-15	
67-68	13-15	
66-67	8-13	
65-66	11-12	
64-65	9-13	
63-64	11-14	
62-63	8-13	
61-62	4-19	
60-61	8-15	
59-60	1-20	
58-59	9-15	
57-58	11-10	
56-57	11-10	
55-56	9-13	
54-55	11-12	
53-54	16-10	
52-53	11-17	
51-52	14-12	
50-51	19-8	*Gulf Conf. Champs
49-50	15-12	
48-49	11-14	
47-48	13-15	
46-47	13-16	

COACHING RECORDS

Carl Nash	1988-1993	89	55	.618
Drayton Miller	1984-1988	92	73	.557
Sam Ionna	1979-1983-84	21	106	.165
Frank Kerns	1972-1978-79	90	95	.486
Jerry Hughes	1968-1971-72	38	60	.388
Kevin Trower	1966-1967-68	21	28	.429
Ed Sparling	1964-1965-66	20	25	.444
Glenn Murphy	1960-1963-64	31	61	.337
Bill Gardiner	1946-1959-60	164	184	.471

ELITE "15" POINT CLUB

1. Chris Williams	84-88	2337
2. Mike McKinley	86-90	2089
3. Darin Tang	84-88	1901
4. Joe Grill	68-71	1775
5. Happy Mahfouz	51-55	1754
6. James Rebarchak	73-77	1753
7. Bill Hajeski	63-68	1630
8. John Jerkins	88-91	1581
9. Michael Baker	63-68	1446
10. Jules Mugnier	48-52	1355
11. Mark Czerniak	67-71	1345
12. P. J. Thelen	89-93	1325
13. Chris Nelson	84-88	1307
14. Mark Thompson	69-73	1279
15. John King	71-76	1264

SPRING HILL



ATHLETIC CLUB

NAME: _____

ADDRESS: _____

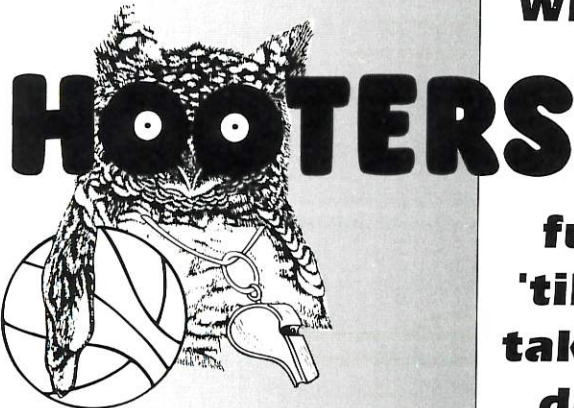
CITY, STATE, ZIP CODE: _____

PHONE NO. _____

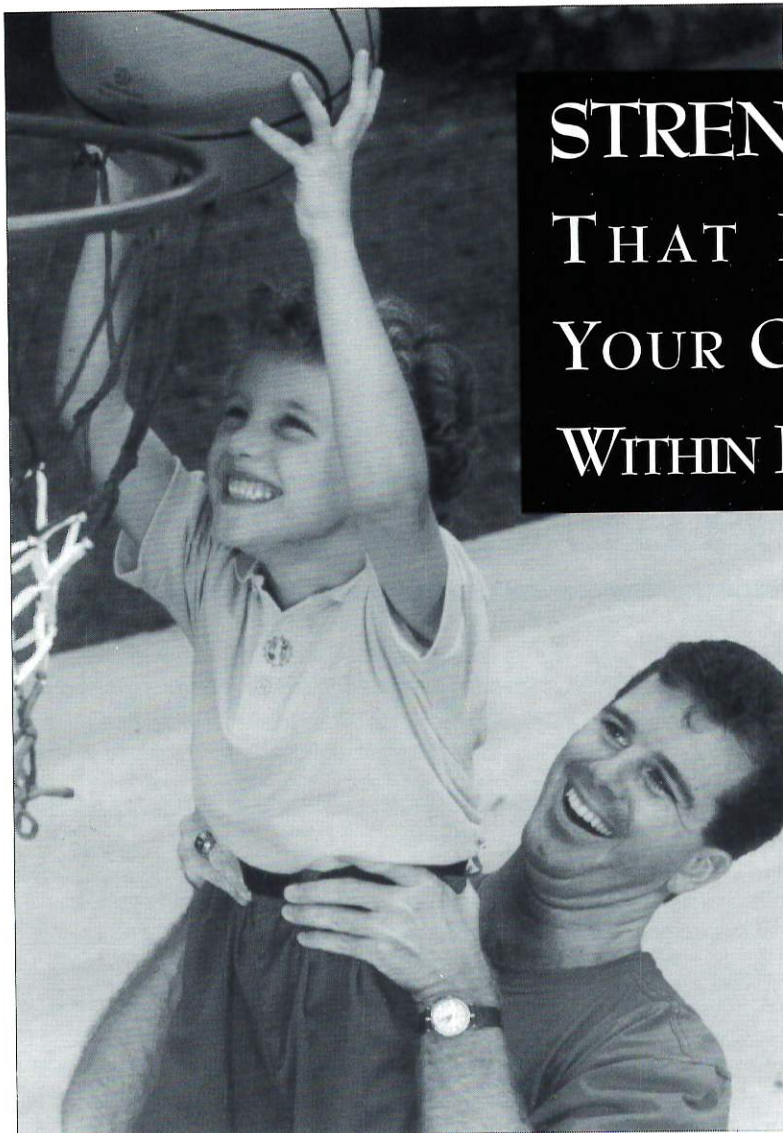
SPORTS THAT INTEREST YOU MOST: _____

- | | | | |
|----------------------|----------|-----------------------|----------|
| _____ FRESHMAN TEAM | \$30.00 | _____ CORPORATE | \$250.00 |
| _____ JUNIOR VARSITY | \$60.00 | _____ ASSISTANT COACH | \$250.00 |
| _____ VARSITY TEAM | \$100.00 | | |
-

Hoop It Up At...



**WINGS, CLAMS,
SHRIMP,
OYSTER
ROASTS &
fun, fun, fun
'til your daddy
takes your slam
dunk away!!!**



**STRENGTH
THAT PUTS
YOUR GOALS
WITHIN REACH**

FirstAlabama® Bank

Member FDIC

Springdale Travel

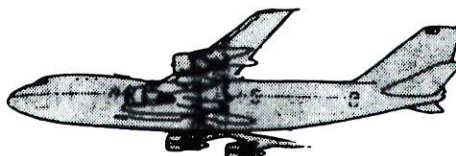
e-1 springdale mall • 3250 airport blvd. • mobile, alabama 36606 • 205-476-5095

**THE LARGEST VOLUME
AGENCY IN MOBILE**

NO CHARGE FOR OUR SERVICES

476-5095

MON.-FRI. - 8 AM - 7 PM SAT. 9 AM - 5PM



AIRLINE TICKETS

SAME PRICES AS THE AIRPORT

FREE DELIVERY OF TICKETS - CITY WIDE

REPRESENTING: ALL AIRLINES, CRUISE & TOUR COMPANIES,
HOTELS, AMTRAK - WORLDWIDE

• BUSINESS TRAVEL • GROUP RATES • HONEYMOON
• AMERICAN EXPRESS TRAVELERS CHECKS



DENNIS LANGAN CONSTRUCTION & REMODELING, INC.

Insured • Licensed • Bonded

Office (205) 661-8881
Voice Pager (205) 460-5770

P.O. Box 91536
Mobile, AL 36691-1536

DENNIS LANGAN

Marriott Backs The BADGERS



**SPRING HILL
COLLEGE**

Marriott corporation
Educational Food Services

Visit
us in the
Cafe
Cloister
and
Golf Shop



It Takes More Than Equipment To Be A Winner.

It takes determination and a desire to be the best. We know, because these qualities, not just our equipment, have made us the cellular choice of thousands. At Contel Cellular®, we support good sports programs. Because good sports programs instill determination and a desire to be the best. And those are qualities needed not only throughout the season, but throughout life. **CONTEL CELLULAR®**

The One Real Difference.

Contel Cellular, 1201 Montlimar Drive, Suite 625, Mobile, AL 36609, 344-2414

**"Our Roots are in Hometown America
But our Reach spans the Globe"**

WILLIS CORROON CORPORATION OF MOBILE

The Wilson Building
51 St. Joseph Street
Mobile, Alabama 36602
205-433-0441

Insurance since 1898

PETER G. HARRISON
A.K.A. "Pete"

4610 Springhill Ave.
Mobile, AL 36608
205-344-8286



Open before lunch, private party rooms
steaks, burgers & other good stuff.



Airport Square:
6576 Airport Boulevard
Mobile, Alabama 36608
Ofc. Phone 205-343-2900
1-800-844-2901
Fax 205-344-0814

SUE McLEAN
Associate Broker
Res. Phone: 205-342-5599

Member Million Dollar Club



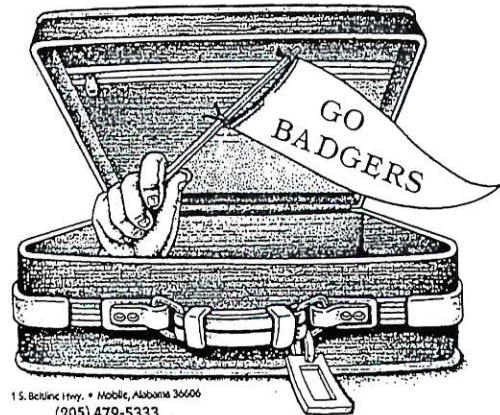
**AmSouth Enjoys Being
Among The Performers**

Performance is the winner's edge in sports. And a tradition at AmSouth. A long-standing commitment to customer satisfaction that keeps us in step with your financial needs.

Performance also brings us to our feet to cheer. AmSouth people applaud, and proudly support, our community's sports activities. We encourage you to be a booster, too.

It's a step **AMSouth BANK**
worth taking. You'll Believe In Our Quality.

**Home Or Away,
A Great Place To Stay.**



1 S. Beeline Hwy. • Mobile, Alabama 36606
(205) 479-5333



Call 800-424-4777



THIRSTY?

THIRSTY?

THIRSTY?

THIRSTY?

Always Coca-Cola.



MEN'S BASKETBALL SCHEDULE 1993 - 94

DATE	OPPONENT	SITE	TIME
NOVEMBER			
• Tues. 9	FAULKNER UNIVERSITY	HOME (ST. PAUL'S)	7:30
Sat. 13	LOYOLA U. OF NEW ORLEANS	AWAY	7:30
Mon. 15	SELMA UNIVERSITY	AWAY	7:30
• Wed. 17	UNIVERSITY OF MONTEVALLO	HOME (ST. PAUL'S)	7:30
Fri. 19	UNIVERSITY OF WEST FL	AWAY	7:30
Tues. 23	FAULKNER UNIVERSITY	AWAY	7:30
Mon. 29	UNIVERSITY OF MONTEVALLO	AWAY	7:00
DECEMBER			
Wed. 1	AUBURN U. OF MONTGOMERY	AWAY	7:30
Sat. 4	LOYOLA U. OF NEW ORLEANS	HOME (EXPO HALL)	7:30
• Sat. 11	AUBURN U. OF MONTGOMERY	HOME (ST. PAUL'S)	7:30
Mon. 13	SELMA UNIVERSITY	HOME (ST. PAUL'S)	8:00
• Wed. 15	UNIVERSITY OF WEST FL	HOME (ST. PAUL'S)	7:30
• Mon. 20	ALABAMA STATE UNIVERSITY	AWAY	7:30
JANUARY			
Sat. 8	DILLARD UNIVERSITY	AWAY	7:30
Mon. 10	BELHAVEN COLLEGE	AWAY	7:30
• Thurs. 13	WILLIAM CAREY COLLEGE	HOME (ST. PAUL'S)	8:30
• Sat. 15	** SOUTHERN U. OF NEW ORLEANS	HOME (ST. PAUL'S)	7:30
• Fri. 21	LOUISIANA COLLEGE	HOME (EXPO HALL)	8:00
• Sat. 22	TOUGALOO COLLEGE	HOME (BAKER H.S.)	7:30
• Mon. 24	UNIVERSITY OF MOBILE	AWAY	7:30
Thurs. 27	XAVIER UNIVERSITY	HOME (McGILL-TOOLEN)	8:00
Sat. 29	LOUISIANA COLLEGE	AWAY	7:30
FEBRUARY			
Thurs. 3	XAVIER UNIVERSITY	AWAY	7:30
Sat. 5	DILLARD UNIVERSITY	HOME (U. SOUTH AL)	7:30
• Mon. 7	BELHAVEN COLLEGE	HOME (ST. PAUL'S)	8:00
Thurs. 10	SOUTHERN U. OF NEW ORLEANS	AWAY	7:30
Sat. 12	TOUGALOO COLLEGE	AWAY	8:00
Thurs. 17	WILLIAM CAREY COLLEGE	AWAY	8:00
Sat. 19	UNIVERSITY OF MOBILE	HOME (U. SOUTH AL)	7:30

** Homecoming

• These games are covered by WKRG Radio 710
Listen to the voice of the Badgers, Lee Shirvanian